

Bonstone Materials Corporation

Adhesives & Patching Systems for Stone, Concrete, Masonry & More



BONSTONE®
• MATERIALS CORPORATION •
~ Since 1962 ~



Manufactured by Bonstone
TOUCHSTONE™

707 Swan Drive
Mukwonago, WI 53149
(800) 425-2214
info@bonstone.com
WWW.BONSTONE.COM



Customer Service Is Our Top Priority

- Technicians who respond quickly
- Advice on products and applications
- Guide you through the process for best results
- Product training and hands on assistance
- Manufacturing for over 58 years!
- Our products are American Made

Need help? Give us a call

Your #1 Source for Stone, Masonry and Concrete Adhesives!

Bonstone Materials Corporation has been manufacturing the highest quality construction adhesives and patching compounds for nearly 60 years. These products are used in new construction, residential restoration/renovation projects as well as the restoration of buildings and monuments. All of our products are made here at our Wisconsin facility. We offer the most trusted products for:

- Laminating
- Seaming
- Rodding
- Repairing and Patching
- Bonding
- Sealing
- Crack Repair,
- Anchoring and More!



Mike Beckmann
President/Tech Support
(800) 425-2214 ext 102
mbeckmann@bonstone.com



Paul Klees
Sales/Tech Support
(800) 425-2214 ext 111
Cell: 414-708-9877
pklees@bonstone.com



Kevin Thorstad
Tech Support
(800) 425-2214 ext 106
kthorstad@bonstone.com



707 Swan Drive
Mukwonago, WI 53149
(800) 425-2214
info@bonstone.com
WWW.BONSTONE.COM



Ultimate MPH™



Buff Gray

Knife Grade, Non-Sag Epoxy

- Modified Polyurethane Hybrid Adhesive
- 2 : 1 Mix Ratio
- Fast Setting (20 Minutes)
- Sets Below Freezing Conditions
- UV Stable (Non-Yellowing)
- Colors Available: Buff and Gray
- Available in 180ml Cartridge, Pint or Quart Kits

Applications

- Vertical and Horizontal Stone to Stone Bonding
- Stone to Metal Bonding
- Dutchman Repairs
- Stone Miters
- Travertine Patching Material
- Anchoring & Pinning



Before



After



Fast Set™ Extreme Thick Knife-Grade Epoxy



- 1 : 1 Mix Ratio
- Fast Setting (2 Hours)
- Cures in Below-Freezing Conditions
- Colors Available: Buff
- Available in 50ml & 250ml Cartridges, 1 & 5 Gallon Pail Kits

Applications

- Vertical and Horizontal Stone to Stone Bonding
- Stone to Metal Bonding
- Stone Panel Assembly
- Stone to Concrete
- Setting Anchor Bolts Into Stone



Fast Set™ 39 & 41 Flowing Paste Epoxy



- 1 : 1 Mix Ratio
- 2 Hr Set Time at 75°F, 24 Cure Time
- Cures At Below Freezing Temperatures

Fast Set 39

- Colors Available: Gray
- Available in 600ml Cartridge, Quarts, 1 & 5 Gallon Pail Kits,



Fast Set 39 Gray

Fast Set 41

- Colors Available: Buff or Cream
- Available in 600ml Cartridge, Quart & Gallon Kits

Applications for 39 & 41

- Anchoring and Pinning
- Dutchman Repairs
- Re-Attaching Stone
- Bonding Mitered Corners
- Stone Panel Assembly
- Stone to Concrete & Metal Bonding
- Monument/Column Setting



Fast 41 Buff



Fast 41 Cream

Structural Adhesives

Clear Gel



Knife Grade, Gel Consistency Epoxy

- 2 : 1 Mix Ratio
- 2 Hr Set Time
- For Applications Where Temp is > 50°F
- Colors Available: Clear
- Available in 180ml & 450ml Cartridges, Quarts & Gallon Kits



Applications

- Setting Anchor Bolts
- Crack Injection
- Vertical and Horizontal Stone to Stone Bonding
- Stone to Metal Bonding

Duropoloxi Thick Paste Epoxy



- 1 : 1 Mix Ratio
- 2 Hr Set Time at 75°F, 24 Cure Time
- 20 Minute Open Time at 75°F
- Non Sag, High Bond Strength
- Water Clean Up
- Colors Available: Gray
- Available in Quarts, Gallon & 5 Gallon Pail Kits

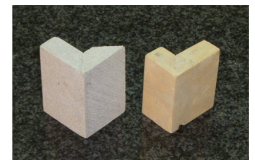
Applications

- For Applications Where Temp is > 50°F
- Setting Stone Pavers
- Use for Spot Bonding or Full Trowel
- Stone to Stone and Stone to Metal Bonding
- Dutchman Repairs

Match Epoxy Flowing Paste Epoxy



- 2 : 1 Mix Ratio
- 2 Hour Set Time at 75°F
- 24 hr Cure Time
- 20 Minute Open Time at 75°F
- Exterior Grade
- Non-Staining
- Colors Available: Buff, Gray & Tan
- Available in Quarts & Gallon Kits



Applications

- Bonding Liner Blocks, Stone Returns and Large Structural Assemblies
- Setting Anchor Bolts
- Bonding Stone to Metal
- Dutchman Repairs
- Anchoring

800-425-2214

info@bonstone.com

WWW.BONSTONE.COM

Anchor Epoxy

Slow Setting

- 1:1 Mix Ratio
- 6-8 Hour Set Time at 70°F
- Can be used in hot or cold temperatures
- May be tinted or thickened
- Colors Available: Cream, Buff, Grey, Mustard
- Available in Quarts or Gallon Kits



Applications

- Anchoring stainless steel bolts in stone panels
- Anchoring concrete
- Stone to stone bonding
- Liner block applications
- Laminating stone to other construction materials
- Assembly window units
- Exterior limestone and granite applications

Block-ItTM Urethane

- 20 minute open time and cures in 3 hours.
- Use with dry, damp or frozen stone.
- Can be used in hot or cold weather conditions.
- Allows for a uniform adhesion layer which help form a permanent bond between the substrates.
- Available in 32oz bottle



Applications

- Great for bonding masonry block and natural stone
- Secures natural and engineered stone retaining walls
- Bonding barbecue/hardscape walls

Crack Repair 31 Epoxy

Low Viscosity

- Mix Ratio = 2:1 by Volume
- Set Time = 3 hrs @ 75°F
- Available in 450ml Cartridges



Applications

- Used for Injecting Into Horizontal Thin Cracks in Stone
- Great For Bonding New Concrete to Existing Concrete
- Cracks Must Be Capped For Vertical Applications

Crack Repair 28 Epoxy

Medium Viscosity

- Mix Ratio = 2:1 by Volume
- Set Time = 3 hrs @ 75°F
- A little thicker than 31 but still flows
- Available in 450ml Cartridges



Applications

- Used for Injection Into Wider Cracks in Stone
- Great for Bonding New Concrete to Existing Concrete
- Cracks Must Be Capped For Vertical Applications

Accessories

Cartridge Guns

50ml Cartridge Gun

- For use with 50 ml cartridges. Works with our Ultimate, Fast Set Extreme



Manual Single Cartridge Gun

- Clear Gel 180ml, Ultimate 180ml, Fast Set Extreme 250ml

Manual Dual Cartridge Gun

- Clear Gel 450ml, Fast Set 41 600ml, Crack Repair 28 450ml, Crack Repair 31 450ml



Nozzles

Extra Small Nozzle - Extreme 50 ml

Small Long Nozzle - Bonstone Crack Repair 28 and 31

Large Long Nozzle - Fast Set Buff NC 600 ml & Clear Gel 450 ml

Protip Nozzle - Bonstone Clear Gel 180 ml

Large Pro Tip Nozzle - Fast Set Extreme 250ml and Ultimate 180ml

Mixing Cups & Sticks

These convenient cups and sticks make small batch mixing of Bonstone epoxy products much easier!

Mixing Cups

Each cup has a measuring table on one side and written instructions for properly mixing your 1:1 ratio, and 2:1 ratio adhesives on the other side. Pack of 50



Mixing Sticks

- 6" Sticks come in a box of 500



Liquid Tints

They can be used for slight adjustments to our pre-colored Bonstone epoxies and urethanes. Available in 2oz and 8oz bottles in the following colors: black, white, gray, red, yellow, red/brown, green brown, buff and blue.



Last Patch Powdered Tints

Ideal for coloring Historical Restoration Mortar (HRM) and Last Patch Limestone.

Available in 1 oz jars in the following colors: brown, gray, green, rust, white, yellow, black, and 7 color set available.



Last Patch Stone Dusts

Used to add to patching adhesives to help blend repairs and take up space that would otherwise be solid glue.. Available in 1oz containers in the following colors: gray granite, pink granite, red granite, white granite, white marble, black granite, brown granite and 7 color set.



Stone Granules

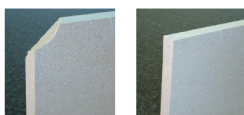
Add granules to create desired body and texture of repair. Designed to be used with Last Patch Dymond and Last Patch Gel but can be used with any of the Bonstone urethans or epoxies. 8oz Jars Available in 7 colors.



1-800-425-2214
info@bonstone.com
WWW.BONSTONE.COM

Last Patch™ Limestone Thick Mortar Consistency

- 7 : 1 Mix Ratio
- Limestone Textured
- Urethane Activated
- UV Color Stable, Non Yellowing
- Colors Indiana Buff, Indiana Gray & Texas Cream
- Available in Quarts



Before

After

Applications

- Patching various limestone, sandstone, concrete and flamed finish granites
- Crack Repair
- Repairing chips, spalls and broken corners on limestone and sandstone
- Can be used as a capping materials between injection ports for epoxy ejection
- Ideal for step edges of stone



Last Patch™ Dymond Polished Hard Surface Repairs

- 1:1 Mix Ratio
- 15 Minute Set Up Time at 75°F
- 2-4 Minute Open time at 75°F
- Clear Color
- UV Color Stable, Non Yellowing
- Zero Shrinkage
- High gloss finish when cured
- Can be polished for a higher gloss or sanded to create a honed look



Applications

- Aesthetic repairs to marble, granite, engineered stone and polished travertine.
- Crack capping materials between injection ports

Last Patch™ Gel Stone Repair Compound

- 1 : 1 Mix Ratio
- 45 Minute Set Time at 75°F, 15 minute with accelerator
- 2 Minute Open Time
- UV Color Stable, Non Yellowing
- Can be tinted using liquid or powdered tints or dusts
- Can be sanded after 24 hours
- Great for freeze thaw conditions
- Exterior Grade
- Available in 2oz, Pint and Quart Kits



Applications

- Repair cracks, chips, spalls and holes in granite, marble and travertine.
- Can be used for interior and exterior repairs
- Allows for slight movement in stone

Universal Accelerator

- Accelerate your cure with Last Patch Gel, Last Patch Limestone, Last Patch Dymond, Ultimate
- Available in .5oz & 2oz Bottles

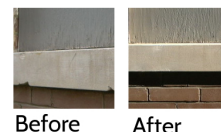


Stone Patching Systems

Historic Restoration Mortar (HRM) Patching Mortar



- 2 Component Lime Based, Latex Modified Patching Mortar
- Fast Setting, 30-60 Minute Set Time
- UV Color Stable, Non Yellowing
- Breathable-Moisture Vapor Permeable
- Easy To Mix
- Resembles Limestone Finish
- Very Low Shrinkage 24% ASTM C157
- Can be tinted with Powered Tints
- Available in 11 Colors (See Chart)
- Available in 7lb and 63lb Kits



Before

After



Applications

- Patching limestone, sandstone, pre-cast, brick and concrete
- Skim coating vertical stone up to 1" depth
- Capping material between injection ports for epoxy injection
- Crack Mending

TravFill Mortar For Filling Holes & Pockets in Travertine

- Easy-to-use
- Fast cure
- Breathable-moisture vapor permeability
- UV-stable
- Colors Available: Neutral or Travertine
- Available in 7lb or 63lb Kits



Applications

- Filling voids and pits in travertine floors
- Skim coating vertical stone
- Designed for durable aesthetic repairs
- Create a honed travertine like finish
- Slight over fill technique for floor machining
- Exterior Travertine Floors



1-800-425-2214
info@bonstone.com
WWW.BONSTONE.COM

Repair Kits

Natural Stone Repair Kit

For easy repair and color matching on granite, marble and limestone surfaces. Ideal for removing unsightly chips and scratches on stone surfaces. Kit includes: Last Patch Dymond, Last Patch Accelerator, Mix sticks, Razor blades, Liquid tints: Black, White, Buff, Brown, Green, Rust, Blue, Yellow

Applications

- Crack Repairs
- Seaming
- Countertop Repairs
- Interior/Exterior Jobs
- Floor and Tile Restoration



Deluxe Stone Repair Kit

Developed for the restoration and repair of granite, marble, travertine and engineered stone. This kit enables you to create most on-site color matches to accurately replicate your stone. Features Last Patch Dymond, Liquid and Powdered Tints plus 3 Stone Dusts to assist you in achieving your color match.

Applications

- Countertop Chips & Scratches
- Hollow Tile Injection
- Re-Attaching Broken Stone
- Vertical & Horizontal Tile Repair
- Interior/Exterior Jobs



Scratch Repair Kit

The Scratch Repair Kit enables you to fill in scratches and cracks on polished stone surfaces for countertops and floors. This fast setting system gives you high polished repairs without using any polishing pads. Kit includes: CA Glue Super Thin, CA Glue Gel, CA Spray Activator, Polish packet

Applications

- Crack Repairs
- Countertop Repairs
- Floor and Tile Restoration
- Chipped Sink and Edge Details
- Surface Scratches



Granite & Marble Repair Kit

Make repairs in minutes using this kit developed for the restoration and repair of granite and marble. Ideal for honed and polished surfaces and UV Stable for interior or exterior applications. Patches hold up through severe climate changes. Kit features: Last Patch Dymond, Last Patch Accelerator, Flitz Polish, CA activator, CA Super Thin, CA Gel, liquid tints: Black, White, Buff, Brown, Green, Rust, Blue, Yellow.

Applications

- Crack Repairs
- Joints & Seams
- Countertop Repairs
- Re-Attaching Chips
- Scratches



NEW Stone Patch Color Chip Kit

Eliminates the guess work in ordering colors of Bonstone Last Patch Limestone and Historical Restoration Mortar. There are 14 color chips of genuine Historical Restoration Mortar and 13 color chips of genuine Last Patch Limestone to choose from in this handy kit. Simply hold up the color chip that matched the stone, identify the color and order your patch material.



NEW Headstone Cleaning Kit

This convenient cleaning kit comes with all the tools you need to safely and effectively clean headstones and monuments. The kit includes a bucket with handles, (1) Quart of D/2 Biological Solution, hand held pump sprayer, plastic scrapers, large utility brush, small detail brush, mixing sticks for getting in the smaller details and rubber gloves.



HRM Repair Kit

This lime-based mortar is a breathable system which allows for vapor transmission. The kit enables you to patch common job site repairs on limestone, sandstone, brick, terracotta, precast and concrete. Kit includes: 3 HRM colors (buff, gray and neutral), latex binder mix sticks, cups and gloves.

Applications

- Repairing Chips, & Cracks
- Broken Off Corners
- Breathable Repairs



Last PatchTM Limestone Repair Kit

Versatile patching kit ideal for limestone, sandstone, precast, concrete. Also works good on some flamed finished granite surfaces. Last Patch has greater strength than most repair compounds

Applications

- Repairing Chips, Spalls and Broken-Off Corners
- Repairing Edges of Limestone Steps, Panels with Chipped Corners and Miters
- Monument and Sculpture Restoration.



1-800-425-2214
info@bonstone.com
WWW.BONSTONE.COM

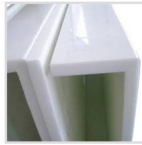
Glacier

Clear, UV Stable Adhesive

- Mix ratio: 1:1
- Sets up 10-20 minutes at 75 degrees
- Fast curing, adjustable cure speed
- UV stable adhesive
- Gel consistency
- Colorless, translucent, non-yellowing
- No odor, non shrinking
- 4 colors: clear, bright white, gray and white,
- Avail in 250ml cartridge, 2oz kit, quart, 1/2 pint, gallon kits

Applications

- Laminating adhesive for light colored marbles, granites, quartz and engineered stone.
- Seaming and rodding
- Outdoor kitchen fabrication
- Interior and exterior seams & laminations



T-2000

Highest Strength Tile Adhesive

- Mix ratio
- 3:1 by weight
- Work time = greater than 2 hrs @ 75°F
- Chemical resistant
- Low VOC (below 0.500 lbs/gal)
- Outstanding adhesion
- Water clean up
- Long open time
- Sold as one gallon unit

Applications

- Tiling walls, boat decks, elevators walls, steel-cased stairs
- Setting stone on a outdoor fireplace
- Adhering stone to stainless steel or aluminum
- Installing countertops
- Working with chemical-resistant areas and other difficult bonding jobs



Edge System

Strongest Adhesive Bond Available

- Mix ratio = 2:1 by volume
- Set time = 2 hrs @ 75°F
- Fast curing
- Transparent and easily polished
- Exceptional strength and durability
- Excellent clarity and easily colorized
- Holds up through rigorous machining
- Exterior grade epoxy
- Ideal for high humidity or freeze-thaw conditions
- Avail in quart or gallon case

Applications

- Countertop fabrication
- Stone lamination
- Laminating stone to other construction materials
- Excellent for rodding countertops
- Stone patching, mending, repairing and bonding



Touchstone Products

Manufactured by Bonstone Materials

Express II Flowing and Knifegrade High Strength Permanent Bonding

- Mix ratio = 2:1 by volume
- Set time = 30 min @ 75°F
- Fast curing
- Transparent and easily polished
- Exceptional strength & durability
- Excellent clarity—easily colorized
- Holds up through rigorous machining
- Exterior grade epoxy
- Ideal for high humidity or freeze-thaw conditions
- Can be tinted with Liquid Tints

Applications

- Countertop fabrication
- Stone lamination
- Laminating stone to other construction materials
- Excellent for rodding countertops
- Stone patching, mending, repairing and bonding

Flowing

- Avail in: 50ml and 450 ml cartridges, quart and gallon kits

Knifegrade

- Avail in: quart & gallon kits



Clear Gel

Knife Grade, Gel Consistency

- Mix ratio - 2:1 by volume
- Set time - 2 hrs @ 75°F
- Transparent and easily polished
- Exceptional strength and durability
- Fast curing
- Holds up through rigorous machining
- Exterior grade epoxy
- Ideal for high humidity or freeze-thaw conditions
- Knife grade (non-sag) viscosity
- Can be tinted with Liquid Tints
- Avail in: 190 & 450 ml cartridges, quart and gallon kits

Applications

- Countertop fabrication
- Excellent for rodding countertops
- Stone lamination
- Laminating stone to other construction materials
- Rodding countertops
- Stone patching (interior only), mending, repairing and bonding



1-800-425-2214

info@bonstone.com

WWW.BONSTONE.COM

Silk

Knife Grade Viscosity

- Mix ratio = 2:1 by volume
- Set time = 2 hours @ 75°F
- Translucent white color
- Transparent and easily polished
- Exceptional strength and durability
- Excellent clarity — easily colorized
- Holds up through rigorous machining
- Exterior grade epoxy
- Ideal for high humidity or freeze-thaw conditions
- Available in quarts & gallons



Applications

- Countertop fabrication
- Mitters for marble, granite and quartz
- Stone lamination
- Laminating stone to other construction materials

Invisibond



- Mix Ratio = 2:1 by volume
- Set Time = 2 hrs @ 75°F
- Fast curing
- Transparent and easily polished
- Exceptional strength and durability
- Excellent clarity and easily colorized
- Holds up through rigorous machining
- Exterior grade epoxy
- Ideal for high humidity or freeze-thaw conditions



Applications

- Countertop fabrication
- Stone lamination
- Laminating stone to other construction materials
- Excellent for rodding countertops
- Stone patching, mending, repairing and bonding

Duropoxi SC

Non-Sag Gel Epoxy

- Exceptional strength & durability
- Knife grade (non-sag) viscosity
- Easy 1:1 mix ratio
- Water cleanup
- Medium-Fast setup time



Applications

- Spot bonding or troweling for stone lay-up
- Setting stone countertops
- Tile setting
- Stone laminating
- Laminating stone to other construction materials
- General purpose adhesive for concrete, masonry, stone, metal, wood, plastic

Touchstone Products

Manufactured by Bonstone Materials

Penetrating Low Viscosity Epoxy



- Mix ratio = 2:1 by volume
- 40% increase in strength of stone
- Very low viscosity gives good penetration
- Long pot life gives more time to penetrate deeply before curing
- Available in quarts & gallons



Penetrating

- Set time = 6-8 Hrs @ 75°F

Penetrating RS

- Set time - 1 - 2 hrs @ 75°F
- Fast set time improves productivity

Applications

- Alternative to rodding countertops
- Strengthen weakened joints in stone
- Can be used around bowl cut outs for added strength

Accessories

T-100

Thickening Powder is a light weight powder used to thicken epoxy, polyester and polyurethane compounds.



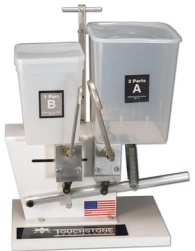
Liquid Tints

They can be used for slight adjustments to our pre-colored Bonstone epoxies and urethanes. Available in 2oz and 8oz bottles in the following colors: black, white, gray, red, yellow, red/brown, green brown, buff and blue.



Easy Mix Dispenser

The Easy Mix Epoxy Dispenser is ideal for fabrication shops and contractors. This heavy duty, aluminum dispenser pumps out your epoxy with a precise 2 to 1 mix ratio, and the on-board heater keeps the epoxy warm in colder shops and when you need faster set times. Designed to work with Touchstone Edge System, Express II Flowing and Penetrating Epoxy.



Scrim

Reinforcing mesh scrim is ideal for reinforcing fragile stones and slabs.



1-800-425-2214

info@bonstone.com

WWW.BONSTONE.COM